

- **OPERATING HIGH VOLTAGE POWER SUPPLY AT COMPUTER**
- **COMMUNICATIONS INTERFACE: USB2.0, RS-232, RS-422**
- **COMMUNICATIONS PROTOCOL OUTWARD**
- **OEM CUSTOMIZATION AVAILABLE**

INTRODUCTION

Wisman's PowerCon Series of high voltage power supplies of control system are dedicated at high voltage power supply. PowerCon included 3 types of communications interface: USB2.0, RS-232, RS-422, oem customization available. The system of communications protocol outward, operating high voltage power supply at computer.

PowerCon INTERFACE:

RS-232 INTERFACE:

- 115K bits per second
- No Parity
- 8 Data Bits
- 1 Stop Bit
- No Handshaking
- DB9 Connector(as shown)

USB INTERFACE:

- Compliant USB1.1 and USB2.0
- Type B male connector
- Included driver

RS-422 INTERFACE:

- 115K bits per second
- No Parity
- 8 Data Bits
- 1 Stop Bit
- No Handshaking
- DB9 Connector(as shown)

PowerCon Cabling:

RS-232 CABLING:

A standard RS-232 cable where lines 2 and 3 are reversed is use to connect the PowerCon serial port to the serial port on a standard personal computer.

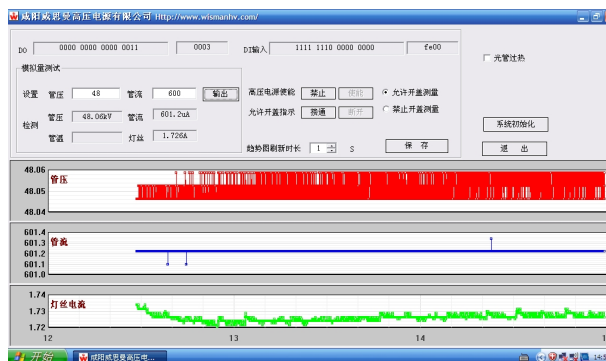
USB CABLING:

A high-quality double-shielded USB2.0 Type A or B (host to slave) cable should be used in all applications. This type of cable is a standard PC to peripheral cable that utilizes full size connectors.

RS-422 CABLING:

A standard RS-422 cable where lines 4 are reversed is use to connect the PowerCon serial port to the serial port on a standard personal computer.

PowerCon software interface:



ACCESSORY